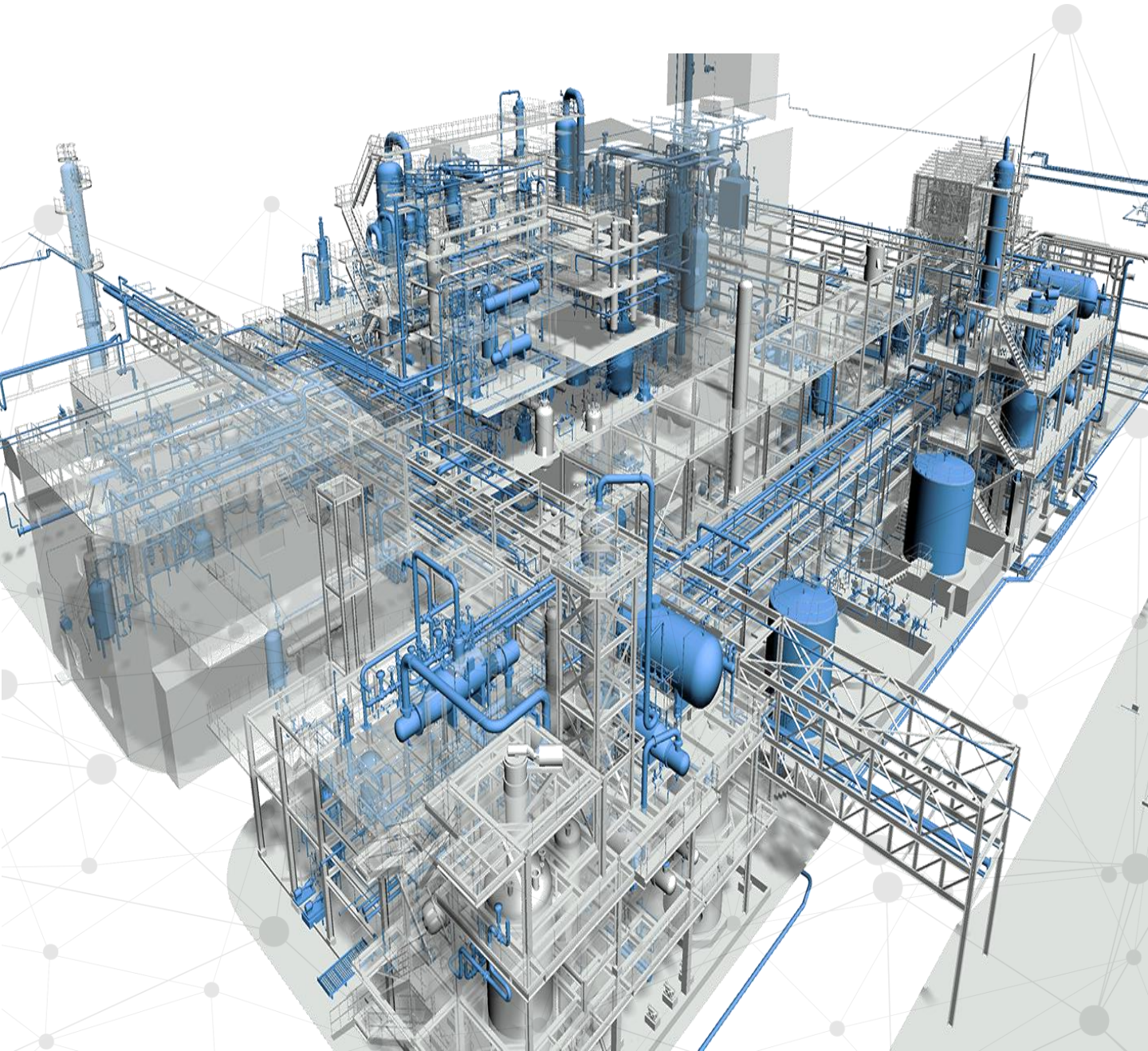


WE HAVE THE SOLUTION



HI-TECH ENG

Prequalification Statement



CONTENTS

I. COMPANY INFORMATION

- 1.1 INTRODUCTION
- 1.2 OVERVIEW
- 1.3 HISTORY
- 1.4 ORGANIZATION
- 1.5 SERVICES
- 1.6 ENGINEERING SOFTWARE
- 1.7 BUSINESS LICENSES
- 1.8 CERTIFICATES

II. BUSINESS AREA

- 2.1 REFINERY&PETROCHEMICAL BUSINESS DESCRIPTION
- 2.2 REFINERY&PETROCHEMICAL BUSINESS MAJOR PROJECT
- 2.3 ENVIRONMENTAL/ENERGY BUSINESS DESCRIPTION
- 2.4 ENVIRONMENTAL/ENERGY BUSINESS MAJOR PROJECT
- 2.5 REFERENCE LIST
 - 1) US \$ 1 MIL. OVER, EPC
 - 2) MAJOR ENGINEERING



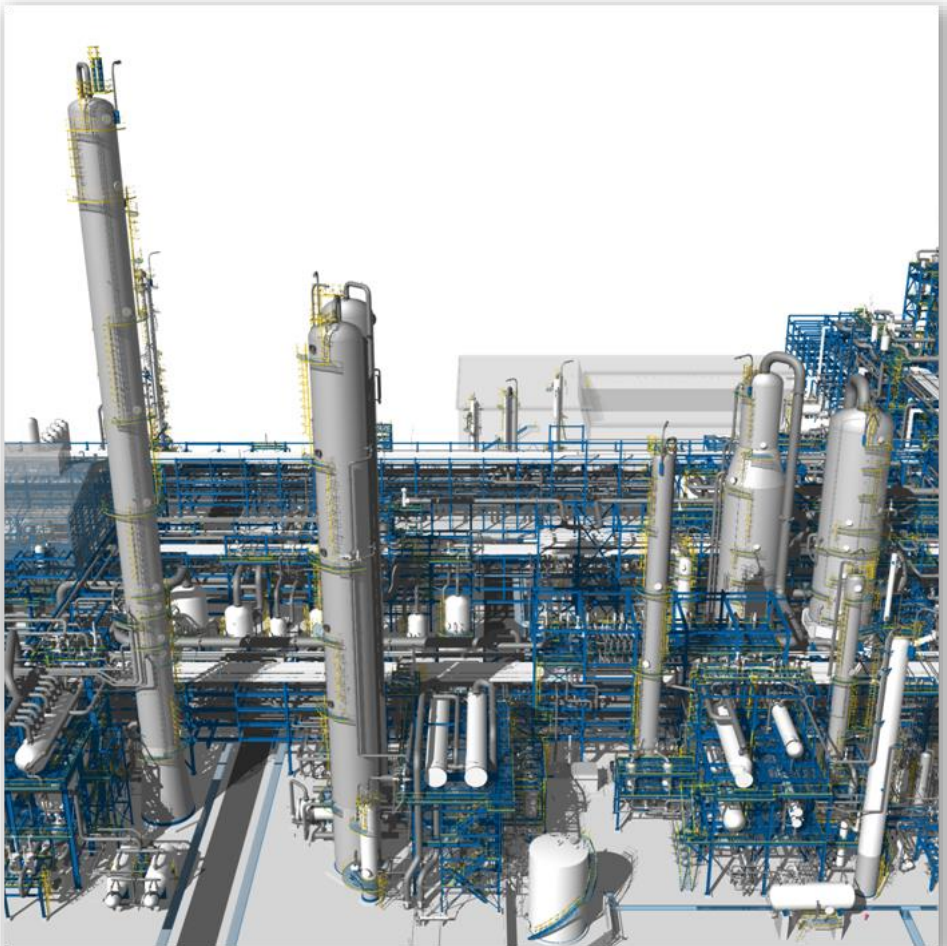
1.1 INTRODUCTION

Since its establishment in 1992, Hi-Tech Engineering has accumulated various project experiences in oil refining, petrochemical, energy and environment, and has now grown as one of the most reliable partners in engineering, project management and construction business fields.

We have a lot of experiences and specialized know-how, especially in the area of process improvement, capacity increasing and revamping project.

Based on our experience, we are carrying out the entire EPC through our own capability in the case of medium-sized projects, and for large projects, we will provide various solutions required by customers based on the experience of our comprehensive design and project management.

With our core competencies of safety, quality, innovation, integrity, respect and cooperation, we will move forward to the future with our customers with confidence that building trust is the our utmost value.



1.2 OVERVIEW

COMPANY NAME : HI-TECH ENGINEERING Co., Ltd.

ADDRESS : 366, 1-RO YEOSU INDUSTRIES, YEOSU-SI, JEOLLANAM-DO, KOREA.

CEO : Jang Yung

DATE OF INCORPORATION : Feb, 1992

(Dec 7, 1995 Established Hi-Tech EVNGINEERING Corp.)

CONTACT : TEL.) 82-61-690-1000, FAX.) 82-61-681-4375

WEB SITE : [HTTP://WWW.HTENC.CO.KR](http://www.htenc.co.kr)

MAIN BUSINESS :

1. Refinery / Petrochemical basic & detail engineering, E.P.C

- Oil & Gas plant
- Refinery & Petrochemical plant
- Chemical & Fine chemical plant
- Storage tank farm & Tank terminal
- Onshore & Offshore loading facility

2. Energy & Power plant's basic & detail engineering, E.P.C

- Cogeneration, New & Renewable energy plant
- Energy diagnosis & saving business (ESCO)

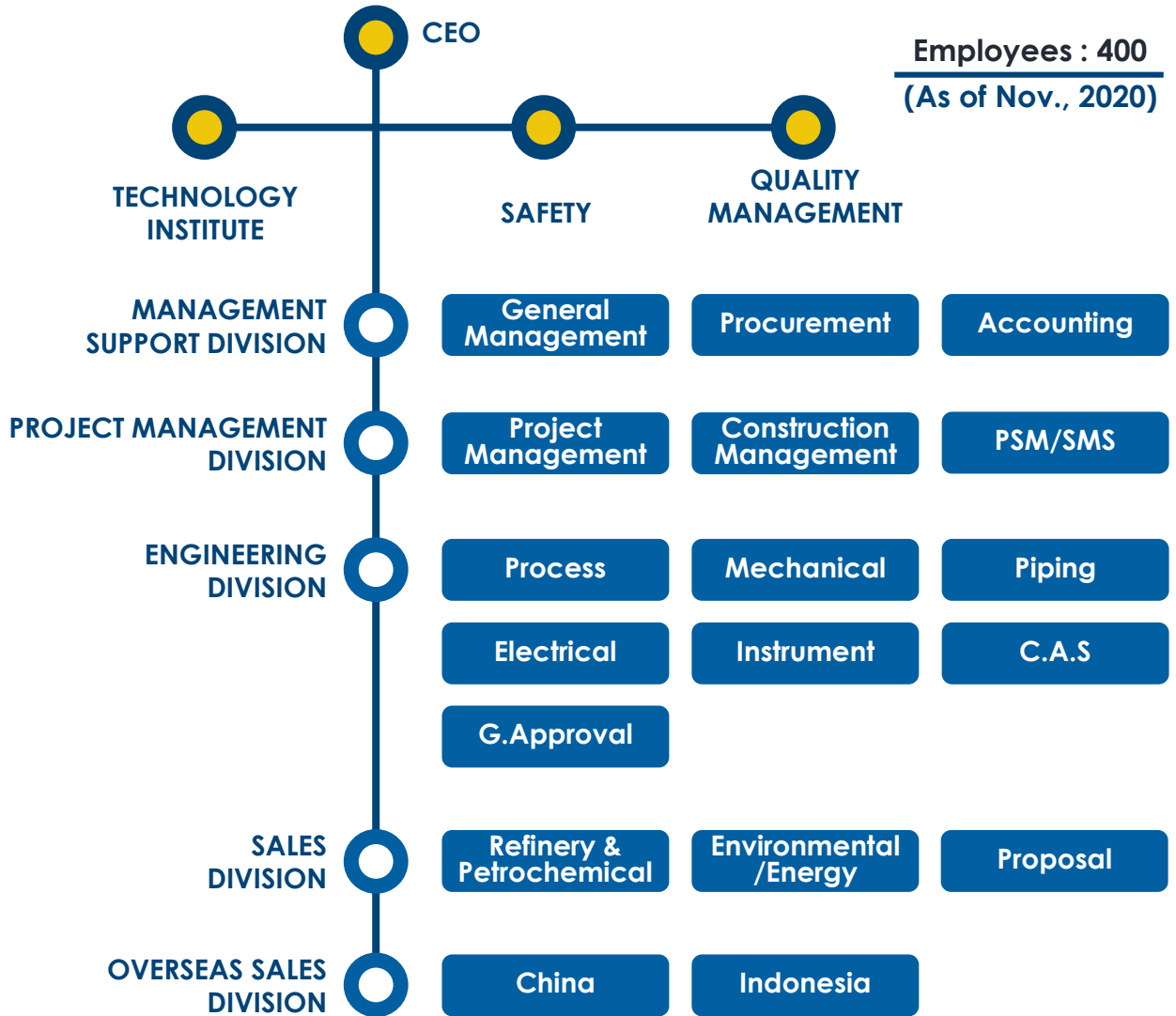
3. Environment facility's basic & detail engineering, E.P.C

- Flue-gas desulfurization, De-nitrification, Atmospheric incinerator
- De-ionized water, Ultra pure water & Wastewater treatment plant

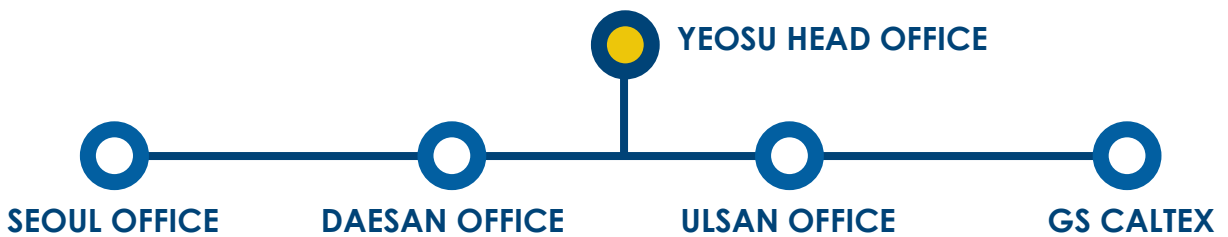
1.3 HISTORY

2020	Registered civil construction business Registered the atmospheric environment specialized construction business
2019	Family-friendly company certified Registered as a safety diagnosis specialized company (Architectue) Venture company certified Registered construction technology services business
2016	Registered survey business (Public/Under ground facilities/Numerial mapping processing business)
2015	Registered as an OCA report preparing specialized organization
2014	Reported as a software entrepreneur Registered mechanical facility construction
2013	Registered 1st class power facility specialized design business Registered architecture construction business
2012	OHSAS 18001 Health and safety management certified(D.N.V) ISO 14001 Environmental management certified(D.N.V) Ulsan office expanded and moved Registered overseas construction business(Industrial environment facility, Electricity)
2011	Registered the specialized fire fighting facility construction business Registered industrial environment facility construction business
2010	Registered electric construction business
2008	Registered as an Energy service company(ESCO)
2007	Moved the head office
2005	Opened Daesan office Opened Seoul office Introduced 3D laser scan(Z+F IMAGER) system Technology institute established and approved Won the minister award of Ministry of Knowledge Economy
2004	Registered the fire fighting facility design business(Mech. & Elec.) Introduced 3D design system (PDS)
2003	Registered integrated construction supervision business(Elec. power facilities)
2002	Reported s an engineering service provider
2001	Introduced 3D design system from AVEVA (PDMS)
2000	ISO 9001 quality management certified (Orion registrar inc., USA)
1998	Registered as a partner company of GS E&C
1995	Registered as partner company of Honam Petrochemical Corp. Registered as Hi-Tech Engineering Co.,Ltd.
1994	Registered as partner company of GS Caltex/Hanwha Chemical
1992	Established Hi-Tech Engineering

1.4 ORGANIZATION



❖ BUSINESS BASE



1.5 SERVICES

HI-TECH Engineering provides all services from customers' perspective.

Consulting & Planning	Engineering & Procurement	Construction & Project Management	Operation & Maintenance
Feasibility Studies	Front End Engineering Design (FEED)	Project Management	Operation Support
Master Planning	Detail Design in all ENG. Disciplines	Construction Management	Warranty Management
Concept Design Studies	3D Laser Scan for Revamping Area	Safety & Quality Control	Facility System Optimization
Plot plan Studies	Value Engineering & Cost Optimization	Contractor Supervision	Technical Staffing
Preliminary Process Flow Diagram	Vendor Recommendations	Construction Schedule Control	
Sizing of Main Equipment	Technical Bidder Evaluation	Start-up & Commissioning Support	
Energy Efficiency Studies	Equipment & Bulk Material Inspection	As-built Documentation	
Definition of Control and Safety	Permit & Environmental Compliance.		
Cost & Schedule Models	Start-up procedures.		

The most efficient services ; Engineering, Procurement, Construction & Construction Management (EPC & EPCM)

1.6 ENGINEERING SOFTWARE

We own all programs needed for plant engineering.

PROCESS & 2D CAD

PRO/ II	2
Aspen Plus	1
AutoCAD	92
AUTODESK ADN	20
Navisworks Manage Network	1
AutoCAD P&ID	22
GTXRaster CAD	22
Smart Plant P&ID	3

CIVIL & STRUCTURE

STAAD PRO V8i SS6	10
STAAD Foundation Advanced V8i SS6	1
AFES	3
MIDAS PLANT	4
MIDAS GEN	2
MIDAS SET	2
Tekla Structure	8

3D CAD / LASER SCAN / STRESS

Smart Sketch	3
PDMS	40
PDS	3
PDMS Review	1
Smart Plant Review	1
PDS Batch ISOGEN	1
Caesar II	1
Microstation J	5
Z+F 3D LASER SCAN	
1) LFM SERVER+GENE RATOR	2
2) Z+F Laser Control	2
3) LFM PDMS LINK + LFM Server	15
AVEVA Laser Model Interface	10
J-Support	1

MECH./ ELEC./ SCHEDULE

Compress Design System	1
Power*Tools SoftWare (Lock-key Type)	1
AVEVA Instrumentation	2
Smart Plant Instrument	3
Control Valve Sizing	2
DNV(Purchase of Phast)	1
SGS 2005 Enterprise Edition	1
MicroSoft Small Business Server 2003	1
MicroSoft PROJECT SERVER	1
MicroSoft PROJECT 2007 PRO.	20

1.7 BUSINESS LICENSES

LICENSES	DATE	ISSUER
ENGINEERING SERVICE PROVIDER REGISTRATION	Jan 21, 2002	Korea Engineering & Consulting Association
CONSTRUCTION(Ind. & Environ.)	Apr 5, 2011	Jeollanam-do
CONSTRUCTION(Build)	Jun 4, 2013	Jeollanam-do
CONSTRUCTION(Civil)	Jun 24, 2020	Jeollanam-do
CONSTRUCTION(Elec.)	Sep 2, 2010	Jeollanam-do
CONSTRUCTION(Machine Equip.)	Oct 7, 2014	Yeosu-si
CONSTRUCTION(Fire Fighting)	Apr 29, 2011	Jeollanam-do
CONSTRUCTION (Atmospheric Environment)	Mar 16, 2020	Jeollanam-do
OVERSEAS CONSTRUCTION (Industrial · Environmental facilities, Electricity)	Oct 23, 2012	Chairman of International Contractors Association
ESCO(Energy Service Company)	Feb 28, 2008	Korea Energy Agency
SUPERVISION(Electric Power Facilities)	May 26, 2003	Jeollanam-do
FIRE FIGHTING (Engineering)	Mar 9, 2010	Yeosu-si fire station
ELECTRIC. FACILITIES (Engineering)	Nov 19, 2013	Jeollanam-do
SOFTWARE BUSINESS REGISTRATION	Apr 30, 2010	Korea Software Industry Association
CONSTRUCTION TECHNOLOGY SERVICES	Jul 17, 2019	Jeollanam-do
OFFSITE CONSEQUENCE ANALYSIS COMPANY	Apr 9, 2015	Minister of environment department
SAFETY DIAGNOSIS INSTITUTION (Architecture)	Dec 12, 2019	Jeollanam-do

I. COMPANY INFORMATION

1.8 CERTIFICATES

QUALITY MANAGEMENT SYSTEM (ISO 9001:2015)



CERTIFIED FOR

Project Management, Preliminary Feasibility Study, Engineering, Design, Procurement, Construction and Commissioning for Plant (Refinery, Petrochemical, General Chemical, Environmental and Industrial Plants included), Civil, Architecture, Steel Structure, Mechanical, Piping, Electrical, Instrument and Fire-Fighting works

DATE

Jul 20, 2018

CERTIFIED BY

DNV GL-Business Assurance

HEALTH & SAFETY MANAGEMENT SYSTEM (ISO 45001:2018)



CERTIFIED FOR

Project Management, Preliminary Feasibility Study, Engineering, Design, Procurement, Construction and Commissioning for Plant (Refinery, Petrochemical, General Chemical, Environmental and Industrial Plants included), Civil, Architecture, Steel Structure, Mechanical, Piping, Electrical, Instrument and Fire-Fighting works

DATE

Mar 2, 2012

CERTIFIED BY

DNV GL-Business Assurance

ENVIRONMENTAL MANAGEMENT SYSTEM (ISO 14001:2015)



CERTIFIED FOR

Project Management, Preliminary Feasibility Study, Engineering, Design, Procurement, Construction and Commissioning for Plant (Refinery, Petrochemical, General Chemical, Environmental and Industrial Plants included), Civil, Architecture, Steel Structure, Mechanical, Piping, Electrical, Instrument and Fire-Fighting works

DATE

Mar 2, 2012

CERTIFIED BY

DNV GL-Business Assurance

VENTURE COMPANY

CERTIFIED FOR

Venture companies by special action law on fostering venture company

DATE

Sep 25, 2019

CERTIFIED BY

Korea Technology Finance corporation

FAMILY-FRIENDLY COMPANY

CERTIFIED FOR

A family-friendly company that establishes an excellent family-friendly management system and operates a family-friendly system.

DATE

Dec 13, 2019

CERTIFIED BY

Minister of Gender Equality and Family

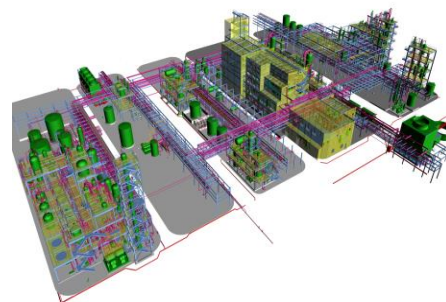
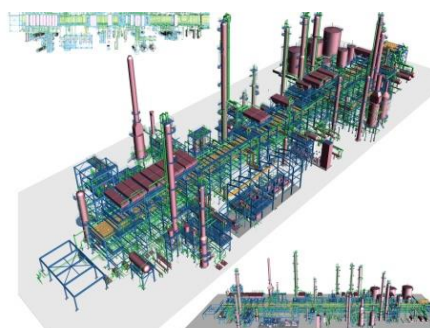
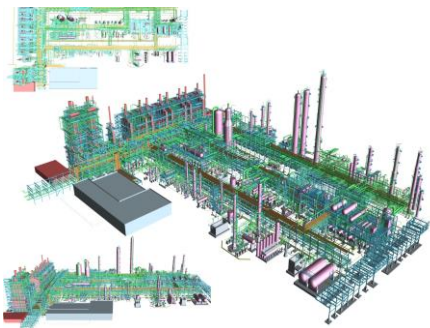
II. BUSINESS AREA

2.1 REFINERY & PETROCHEMICAL BUSINESS DESCRIPTION

Technical professionals with a wide range of design experience, and expertise in Oil & Gas, Refinery, Petrochemical, General chemical are essential in the Plant projects.

Hi-Tech Eng. is performing many of the projects successfully in all of the areas such as project planning, feasibility study, detailed designing, procurement of equipment & materials, construction management and commissioning based on the experiences and accumulated technical powers in designing and procurement service areas with many of the typical local oil refining & petrochemical companies such as GS Caltex, Hyundai Oil Bank, Kumho Petrochemical, Kumho Mitsui Chemicals, Lotte Chemical Corporation, Hanwha Solution etc. together with the overseas projects.

2.2 REFINERY & PETROCHEMICAL BUSINESS MAJOR PROJECT



PROJECT	NCC REVAMPING PROJECT
CLIENT	GS E&C (LG CHEM)
LOCATION	DAESAN. KOREA
PERIOD	Jan,2006~May,2007
SCOPE	E. PS. FE

PROJECT	LPC BRU REVAMPING PLANT
CLIENT	GS E&C (HONAM PETROCHEM)
LOCATION	DAESAN . KOREA
PERIOD	Jan,2007~May,2008
SCOPE	E. PS. FE

PROJECT	MDI 50,000MT REVAMPING
CLIENT	KUMHO MITSUI CHEM
LOCATION	YEOSU. KOREA
PERIOD	Jul,2011~Jun,2012
SCOPE	E. P. C



PROJECT	KERO MEROX SPLITTER
CLIENT	GS CALTEX
LOCATION	YEOSU. KOREA
PERIOD	Mar,2011~Nov,2011
SCOPE	E. PS

PROJECT	OTK E-4 PROJECT
CLIENT	ODFJELL KOREA
LOCATION	ULSAN. KOREA
PERIOD	Aug,2010~Oct,2011
SCOPE	E. PS

PROJECT	NCC REVAMP. GHT PLANT
CLIENT	GS E&C (LG CHEM)
LOCATION	DAESAN. KOREA
PERIOD	Jan,2006~May,2007
SCOPE	E. PS. FE

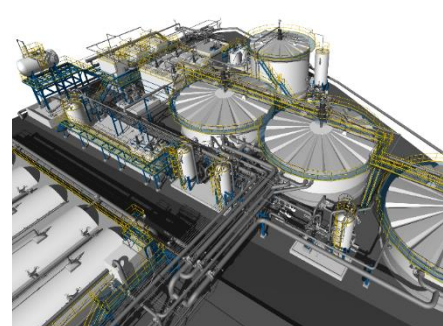
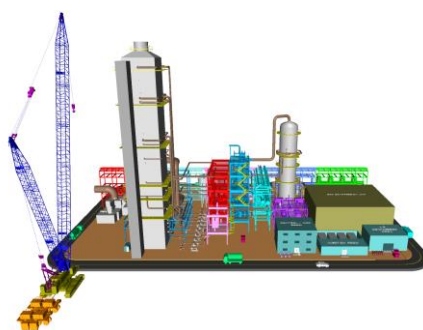
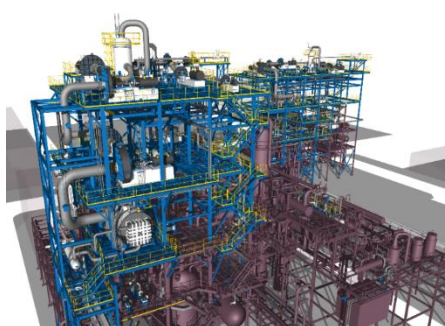
2.3 ENVIRONMENTAL/ENERGY BUSINESS DESCRIPTION

The Environmental/Energy Business is a green growth business that minimizes greenhouse gas emissions and environmental pollution through environmental preservation and efficient use of energy resources.

We are continuously developing and promoting low-carbon eco-friendly technologies to respond to global issues such as climate change and energy conversion, and as an Energy Service Company(ESCO), we are contributing to the efficient use and reduction of energy in the environment, renewable and cogeneration fields.

2.4 ENVIRONMENTAL/ENERGY BUSINESS MAJOR PROJECT

CLIENT	PROJECT	PERIOD	SCOPE
KOREA ELECTRIC POWER	10MW CCS(CARBON CAPTURE STORAGE) PROJECT	Dec,2017~Nov,2021	E. P. C
KUMHO P&B CHEM	MVR(IV) PROJECT	Oct,2016~Jan,2017	E. P. C
KOREA ELECTRIC POWER	150MW CO2 CAPTURE TECHNOLOGY MODULE PROJECT	Dec,2015~Sep,2017	E
KUMHO POLY CHEM	2 LINE MVR PROJECT	Apr,2015~Dec,2015	E. P. C
KUMHO P&B CHEM	MVR(II) PROJECT	Jun,2015~Apr,2016	E. P. C
LOTTE CHEM	H-PC, T-130 (MPC REACTION TOWER) MVR INSTALLATION PROJECT	Jan,2014~Dec,2014	E. P. C
KUMHO MITSUI CHEM	HYPER SALINE W.W TREATMENT SYSTEM	Mar,2012~Sep,2012	E. P. C
KUMHO MITSUI CHEM	MDI 50,000MT MVR SYSTEM	Feb,2012~Aug,2012	E. P. C
KUMHO POLY CHEM	HEAT RECOVERY MVR SYSTEM	Jan,2012~Jul,2013	E. P. C
KUMHO POLY CHEM	HEAT RECOVERY MVR SYSTEM	Jan,2010~Aug,2010	E. P. C
HANWHA CHEM	CA2 TEAM SRS PACKAGE	Dec,2009~Apr,2010	E. P. C
KUMHO PETRO CHEM	R-LINE MVR SYSTEM	Apr,2009~Jan,2010	E. P. C
KUMHO PETRO CHEM	PLANT WASTE HEAT RECOVER FACILITIES	Jun,2009~Oct,2009	E. P. C



PROJECT	MVR PROJECT
CLIENT	KUMHO POLY CHEM
LOCATION	YEOSU. KOREA
PERIOD	Apr,2015~Nov,2015
SCOPE	E. P. C

PROJECT	150MW CO2 CAPTURE PROJECT
CLIENT	KOREA ELETRIC POWER
LOCATION	BORYEONG. KOREA
PERIOD	Nov,2015~Sep,2017
SCOPE	E

PROJECT	WWT SYSTEM
CLIENT	KUMHO MITSUI CHEM
LOCATION	YEOSU. KOREA
PERIOD	Mar,2012~Sep,2012
SCOPE	E. P. C

2.5 REFERENCE LIST

1) US\$ 1 MIL., EPC

NO.	CLIENT	PROJECT	PERIOD	PRICE
1	KUMHO P&B CHEM	LER(LIQUID EPOXY RESIN) STEP III 45,000T REVAMPING PROJECT	Jan,2018~Jun,2019	\$50,898,000
2	KUMHO PETRO CHEM	SBS(STYRENE BUTADIENE STYRENE) 45,000T REVAMPING PROJECT	Oct,2019~Dec,2020	\$44,774,000
3	KUMHO PETRO CHEM	POLYMERIZATION G-LINE NB LATEX PARALLEL PRODUCTION FACILITY CAPA UP	Nov,2015~Jul,2017	\$39,478,000
4	KUMHO MITSUI CHEM	MDI(METHYLENE DIPHENYL ISOCYANATE) 50,000MT REVAMPING PROJECT	Jul,2011~Jun,2012	\$36,003,000
5	KUMHO MITSUI CHEM	MDI(METHYLENE DIPHENYL ISOCYANATE) 60,000MTPA PLANT REVAMPING PROJECT	Jun,2018~Dec,2019	\$32,804,000
6	LOTTE E&C	LCC D-EG1 DEBOTTNECKING PROJECT (MEG 50,000MT CAPA UP)	Oct,2014~Sep,2016	\$30,691,000
7	KUMHO P&B CHEM	80,000T/Y KAR(KUMHO ACETONE RECYCLE) PROJECT	Oct,2019~May,2021	\$28,302,000
8	LOTTE ADVANCED MAT'L	ABS 65,000MTY REVAMPING PROJECT	Dec,2016~Aug,2017	\$27,060,000
9	SK MATERIALS	W-3 PLANT 300TON/Y EXPANSION PROJECT	Dec,2016~Oct,2017	\$26,037,000
10	OCI	P2 CVD HEAT RECOVERY SYSTEM MANUFACTURING & INSTALLATION	Apr,2015~Sep,2015	\$25,829,000
11	KUMHO P&B CHEM	LER(LIQUID EPOXY RESINS) STEP II 45,000MTPA REVAMPING PROJECT	Aug,2013~Jul,2014	\$23,430,000
12	VERSUM PM KOREA	ALCHEMY PROJECT (CSP 80MTPY + AMP 15MTPY NEW)	Feb,2018~Aug,2019	\$22,770,000
13	KUMHO PETRO CHEM	W.W.T(WASTE WATER TREATMENT) FACILITIES EXPANSION PROJECT	Jan,2013~Jul,2016	\$22,202,000
14	LG MMA	ACRYLIC RUBBER PRODUCTION PROCESS CONSTRUCTION WORK	Jul,2018~Feb,2020	\$21,373,000
15	KUMHO P&B CHEM	STT(I) STORAGE FACILITIES INSTALLATION	Jul,2018~Jan,2020	\$18,315,000
16	KUMHO P&B CHEM	MIBK(DIISOBUTYL KETONE) 55KT CAPA UP PROJECT	Nov,2011~Dec,2012	\$18,260,000
17	KUMHO MITSUI CHEM	NEW LOGISTICS BASE CONSTRUCTION	Oct,2019~Aug,2020	\$17,050,000
18	SK SHOWADENKO	SS PROJECT EPC LUMP & SUM TURNKEY PROJECT (CH3F 20TON/Y)	Jun,2017~Dec,2017	\$16,773,000
19	LOTTE E&C	HONAM PETRO CHEM HPEO(HIGH PURITY ETHYLENE OXIDE) PROJECT	Dec,2010~Oct,2012	\$14,715,000
20	OCI	GUNSAN PLANT, AGRICULTURAL WATER UTILIZATION FACILITY INSTALLATION	Jan,2017~Aug,2017	\$14,640,000
21	GS E&C	GS CALTEX MFC(MIXED FEED CRACKER) OUTSIDE PIPE LINE INSTALLATION WORK	Sep,2019~Nov,2020	\$13,381,000
22	KUMHO POLY CHEM	NEW PLANT WASTE HEAT RECOVERY SYSTEM INSTALLATION	Jan,2012~Jul,2013	\$12,925,000
23	KUMHO POLY CHEM	KP-1 PLANT 2-LINE MVR(MECHANICAL VAPOR RECOMPRESSION) PROJECT	Apr,2015~Nov,2015	\$11,786,000
24	KUMHO P&B CHEM	SER(SOLID EPOXY RESINS) STEP II 15,000MTPA REVAMPING PROJECT	May,2017~Feb,2018	\$10,524,000
25	LG CHEM	BUTENE-1, RBD PROJECT CONSTRUCTION	Apr,2018~Jan,2019	\$10,285,000

2.5 REFERENCE LIST

2) MAJOR ENGINEERING

NO.	CLIENT	PROJECT	PERIOD	PRICE
1	GS E&C	LG CHEM Y2C PROJECT (ETHYLENE 800,000MT/Y)	Nov,2018~Jun,2021	\$17,721,000
2	GS E&C	UZBEKISTAN UGCC ETHYLENE 600,000MT/Y PROJECT (MECHANICAL/PIPING/ELEC./INSTR./CIVIL DESIGN)	Oct,2012~Jul,2014	\$5,500,000
3	POSCO ENG	KUMHO POLY CHEM YEP-V(EPDM) 60,000MT/Y CONSTRUCTION PROJECT	Jul,2013~Nov,2015	\$5,000,000
4	KUMHO MITSUI CHEM	MDI PH DESIGN/MATERIALS	Feb,2009~Jan,2010	\$4,785,000
5	SERVEONE	LG MMA M3 REVAMPING PROJECT (GENERAL CONTRACTOR)	Sep,2017~Aug,2019	\$3,938,000
6	HANWHA E&C	THE PROJECT OVERALL DESIGN SERVICE	Dec,2017~Jun,2019	\$3,703,000
7	SERVEONE	YEOSU CA2 GENERAL CONTRACTOR	Mar,2018~Dec,2019	\$3,274,000
8	HYOSUNG	200,000T/Y PP3(PROPYLENE PURIFICATION C3) PROJECT	Aug,2015~Dec,2016	\$3,245,000
9	GS E&C	PIPING DESIGN FOR LG CHEM DAESAN REVAMPING PROJECT	Jan,2006~May,2007	\$2,776,000
10	KUMHO MITSUI CHEM	ADL SAFETY FACILITY INSTALLATION OF EXISTING MDI SYNTHESIS PLANT	Jul,2009~Nov,2010	\$2,530,000
11	DAELIM INDUSTRIES	DETAIL DESIGN FOR S-OIL RUC PROJECT SITE, AREA-5(REVAMPING OF EXIST. FACILITY)	Oct,2015~Jan,2019	\$2,491,000
12	GS E&C	GS CALTEX MFC PROJECT (PIPING/ELEC./INSTR./CIVIL DESIGN)	Nov,2018~Jun,2021	\$2,462,000
13	KPIC	ULSAN PLANT SPP PROJECT DESIGN	Mar,2017~Jul,2018	\$2,408,000
14	KUMHO POLY CHEM	ENGINEERING FOR CONSTRUCTION OF TPV(THERMO PLASTIC VULCANIZATE) PRODUCTION FACILITIES	Mar,2007~Sep,2007	\$2,354,000
15	SERVEONE	LG CHEM DAESAN PLANT POE ISBL PIPING DESIGN	Nov,2016~Dec,2018	\$2,332,000
16	SAMSUNG C&T	OFF-SITE IMPROVEMENT PLAN DETAIL DESIGN & APPROVAL	Apr,2017~Aug,2018	\$2,268,000
17	GS CALTEX	DESIGN & APPROVAL OF LAND & MARINE FACILITIES FOR NO.3 PRODUCT PIER	Apr,2013~Mar,2018	\$2,266,000
18	DAELIM INDUSTRIES	PB2(POLY BUTENE) 100,000MTA REVAMPING PROJECT	Jul,2015~Jul,2017	\$2,188,000
19	GS E&C	PIPING DESIGN OF 2014 NCC(NAPHTHA CRACKING CENTER) EXPANSION PROJECT	Jan,2014~Sep,2015	\$2,186,000
20	SERVEONE	YEOSU LG CHEM SAP5(SUPER ABSORBENT POLYMER) REVAMPING PROJECT	Nov,2017~May,2019	\$1,958,000
21	GS CALTEX	CONSTRUCTION OF PIPING 3D INSPECTION DRAWINGS(OUTSIDE THE FACTORY)	Dec,2018~Jun,2019	\$1,760,000
22	GS E&C	LG CHEM 4AA PROJECT (MECHANICAL/PIPING/ELEC./INSTR./CIVIL DESIGN)	Nov,2010~Jul,2012	\$1,716,000
23	DAELIM INDUSTRIES	E(ETHYLENE PROPYLENE OLIGOMER) PROJECT DESIGN & APPROVAL	Jul,2016~Sep,2017	\$1,657,000
24	LG TOYO ENG	ELEC./INSTR./CIVIL DESIGN OF 2014 NCC(NAPHTHA CRACKING CENTER) EXPANSION PROJECT	Jan,2014~Dec,2014	\$1,595,000
25	GS E&C	CONSTRUCTION OF PIPING 3D INSPECTION DRAWINGS(INSIDE THE FACTORY)	Feb,2019~Apr,2021	\$1,540,000
26	LOTTE CHEM	K-PIA, PTA IG DRYER VENT GAS PREVENTION FACILITY(ACTIVATED CARBON ADSORPTION TOWER) PRODUCTION AT ULSAN PLANT	Feb,2018~Mar,2019	\$1,474,000
27	LG CHEM	DETAIL DESIGN FOR EXTENSION COMPLEX UTILITY CENTER & INFRASTRUCTURE CONSTRUCTION	Apr,2018~Mar,2019	\$1,455,000
28	GS E&C	TAME(TERTIARY AMYL ETHER) PROJECT	Oct,2011~Mar,2013	\$1,382,000
29	GS CALTEX	DETAIL DESIGN FOR RFCC(RESIDUE FLUID CATALYTIC CRACKING UNIT) WET GAS SCRUBBER INSTALLATION	Nov,2017~Jan,2019	\$1,382,000
30	GS E&C	DESIGN FOR GS CALTEX VGOFFCC PROJECT SAPO-PIPE LINE (PIPING/ELEC./INSTR./CIVIL)	Nov,2011~Apr,2013	\$1,309,000
31	HYUNDAI ENG	HYUNDAI OIL BANK REVAMPING EPC PROJECT(PIPING/ELEC./INSTR./CIVIL DESIGN)	Nov,2016~Dec,2018	\$1,243,000
32	ISU E&C	OTK NO.4 EXPANSION PROJECT	Nov,2016~Dec,2018	\$1,185,000



We have the Solution!
HI-TECH ENG

366, 1-Ro Yeosu Industrial Complex,
Yeosu-si, Jeollanamdo, Korea
TEL. 82-61-690-1000(REP.)
FAX. 82-61-681-4375

[HTTP://WWW.HTENC.CO.KR](http://www.htenc.co.kr)